

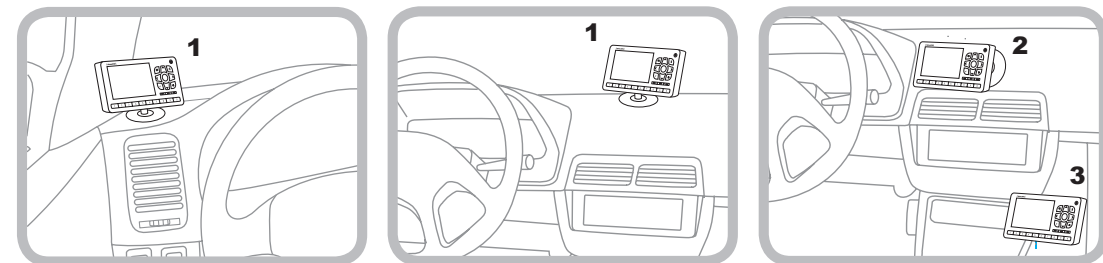
## 1 Find a Location for the Roady BT Display and Mount it

Select either the **Dash Mount** method or the **Vent Mount** method for mounting the Roady BT. Or, if there is a metal surface in the vehicle, the Magnet can be attached directly to the metal surface without using the Dash or Vent Mount. Other magnetic type mounts may also be purchased separately from other vendors.

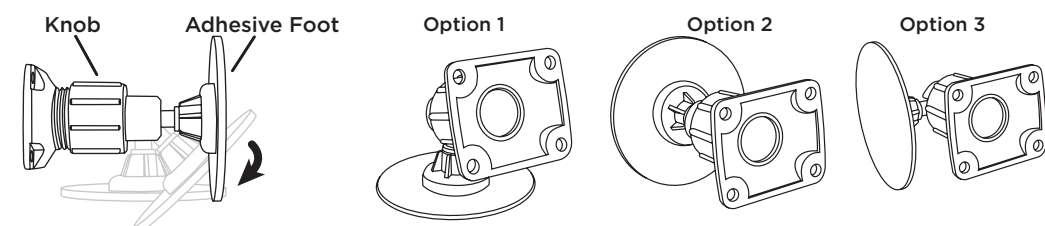
### Dash Mount Method:

**IMPORTANT:** The air temperature needs to be at least 60°F to install the Dash Mount. If needed, turn on the heater in your vehicle.

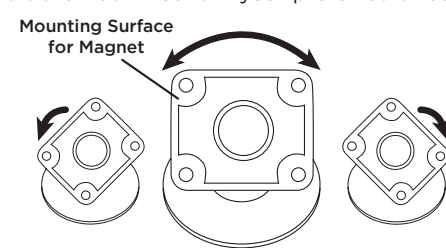
- A. Select a flat surface for the Dash Mount with ample room for the Roady BT display. Avoid mounting on leather surfaces. Choose a location that doesn't interfere with the driver's vision or access to driving controls, one that won't interfere with the deployment of airbags or other safety equipment, and makes the Roady BT display easily accessible for operation. (Airbag locations are typically marked with "SRS" logos.)



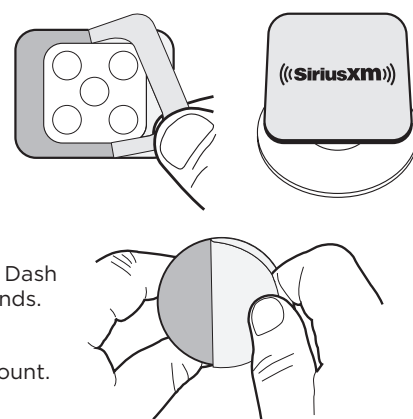
- B. Orient the adhesive foot so that Roady BT is easily accessible. Loosen the knob and adjust the adhesive foot to position **1**, **2**, or **3**, and then tighten it.



- C. You can tilt the Dash Mount in your preferred direction.

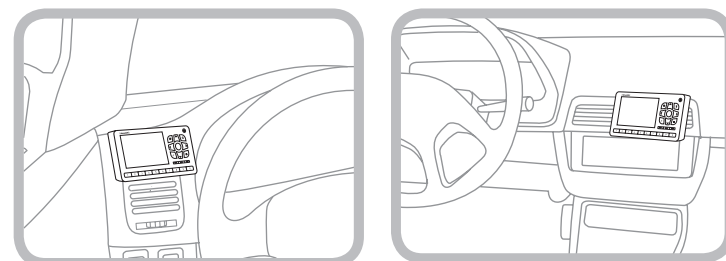


- D. Remove the adhesive liner from the back of the Magnet and adhere the adhesive side of the Magnet to the Dash Mount.
- E. Clean the mounting surface in the vehicle with the alcohol preparation pad and let it dry thoroughly.
- F. Once the surface is dry, remove the adhesive liner from the Dash Mount. Press and hold the Dash Mount in place for 30 seconds. Allow the adhesive to cure for 2-4 hours.
- G. Attach the Roady BT Display to the magnet on the Dash Mount.

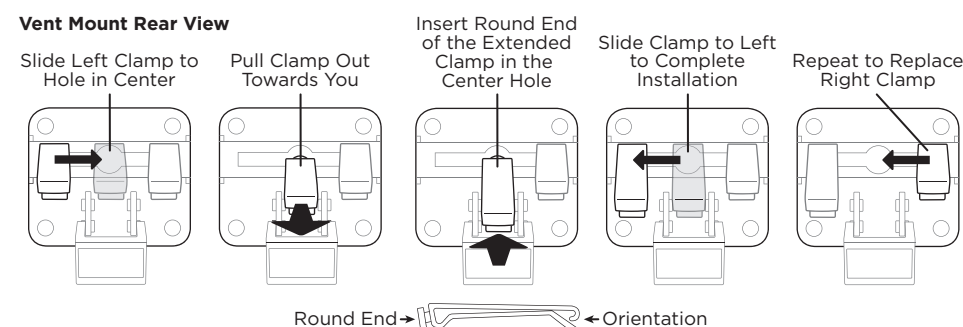


### Vent Mount Method:

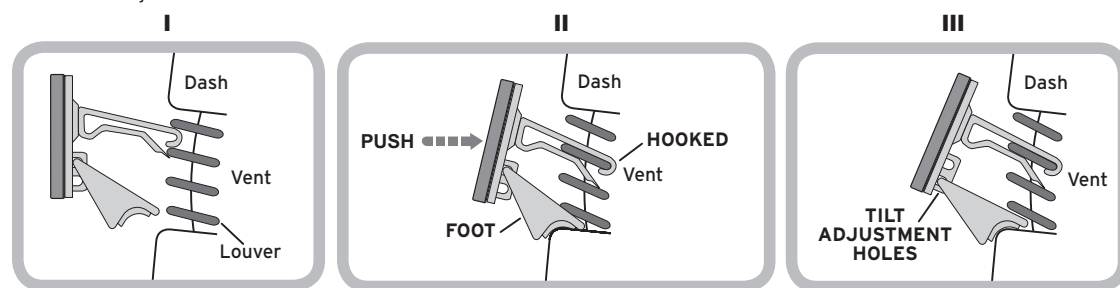
- A. Select a vent with ample room for the Roady BT display, one that won't interfere with the deployment of airbags or other safety equipment, and makes the Roady BT display easily accessible for operation. (Airbag locations are typically marked with "SRS" logos.)



- B. Some vents have recessed louvers. If yours are recessed, remove the regular vent clamps and install the extended vent clamps.



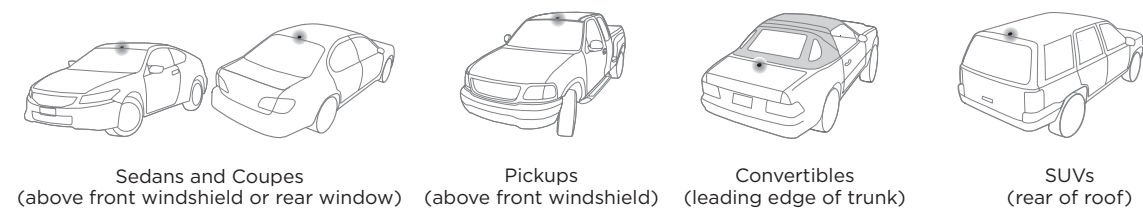
- C. Remove the adhesive liner from the back of the Magnet and adhere the adhesive side of the Magnet to the Vent Mount.
- D. Install the Vent Mount onto the vehicle vent.
  - Insert the vent mount into the vent opening.
  - Push until hooked on the rear of the vent louver. Rest the foot against the bottom of the vent.
  - If necessary, adjust the tilt of the Vent Mount by repositioning the foot to a different tilt adjustment hole.



- E. Attach the Roady BT Display to the magnet on the Vent Mount.

## 2 Mount the Magnetic Mount Antenna

- A. Mount the Magnetic Mount Antenna outside your vehicle, on a clean and dry horizontal surface that will always face the sky.
- B. Choose the location for the antenna according to your type of vehicle. Center it between the left and right sides, and away from other antennas.



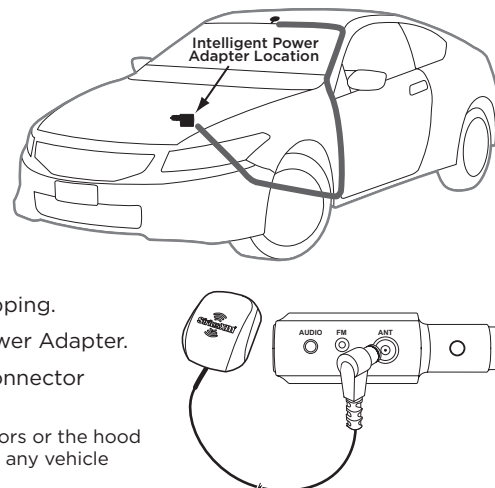
**TIP:** Use the Alcohol Prep Pad to clean the surface.

## 3 Route the Antenna Cable

**NOTE:** These instructions are for a sedan or coupe where the antenna is mounted above the front windshield. The Roady BT User Guide has detailed antenna cable routing instructions for all types of vehicles. Go to [www.siriusxm.com/guides](http://www.siriusxm.com/guides) for the User Guide.

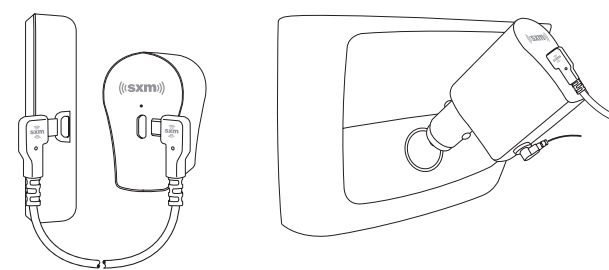
- A. Tuck the antenna cable under the rubber molding around the glass and run it to the nearest corner.
- B. Route the cable out of the molding and into the rubber weather stripping around the door opening.
- C. Lift the weather stripping. Tuck and run the cable inside it to the bottom of the door opening. Replace the weather stripping.
- D. Pull the cable out and route it to the Roady BT Intelligent Power Adapter.
- E. Plug the Magnetic Mount Antenna connector into the **ANT** connector on the Intelligent Power Adapter.

**TIP:** Include enough slack in your routing to accommodate open doors or the hood lid. Coil any excess cable in a hidden location and keep it away from any vehicle pedals or controls.



## 4 Connect the Intelligent Power Adapter

- A. Connect one end of the Display Cable to the Intelligent Power Adapter and the other end to the Roady BT display.
- B. Insert the Intelligent Power Adapter into your vehicle's cigarette lighter or power adapter socket.
- C. Roady BT should power on automatically. If not, press the **Power button** on Roady BT to turn it on.



## 5 Verify Signal Reception

- A. Be sure the vehicle is outside and the antenna has a clear view of the sky.
- B. Verify that you are receiving the XM signal. The Roady BT Radio should be tuned to XM channel 1, the XM Preview channel. There should at least be two bars in the upper right corner of the Now Playing screen that denotes antenna signal strength. If not, be sure that you have mounted the antenna on the outside of the vehicle, as shown in step 2, and that the vehicle is parked outdoors with a clear view of the sky. Move the vehicle away from any obstructed area, for example, if you are parked in a garage, or parked near a large structure.
- C. You can also press the **Menu button** and then press **▼** to scroll to and highlight **Signal Indicator**. Press the **Select button**. The Satellite and Terrestrial bars show the strength of the signal being received. If the signal reception is good, press and hold the **Menu button** to return to XM channel 1, the XM Preview channel.



## 6 Connect the Audio

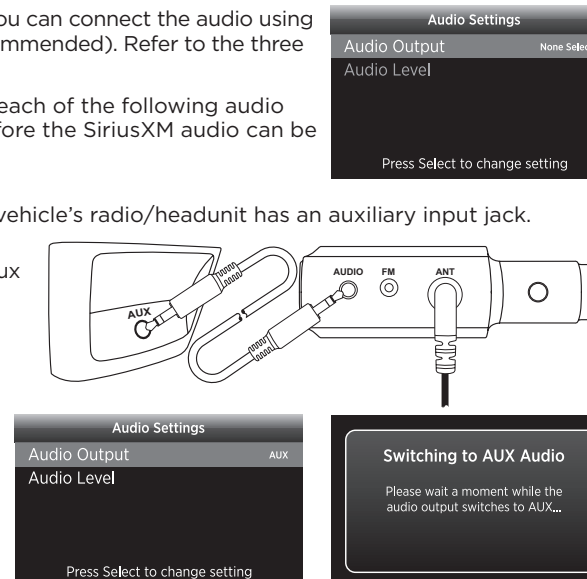
Decide on one of the in-box audio connection options, **Aux** or **Bluetooth**, or you can connect the audio using an **FM Direct Adapter (FMDA25)** (sold separately, professional installation recommended). Refer to the three following sections for each audio option installation.

Note that initially no audio connection option is selected for Roady BT. For each of the following audio connection options you will first need to select the desired audio option before the SiriusXM audio can be heard.

**AUX: Best:** Connect the audio using the provided **Aux Audio Cable** if your vehicle's radio/headunit has an auxiliary input jack.

- A. Plug one end of the Aux Audio Cable into the **AUDIO** connector of the Intelligent Power Adapter and the other end into the auxiliary input (Aux or Audio) jack in the vehicle.
- B. Turn on your vehicle's radio/headunit and set it to play from the auxiliary input source.
- C. Press the **Menu button** on Roady BT and then, press **▼** to highlight **Audio Settings** and press **Select**.
- D. **Audio Output** will be highlighted. Press the **Select button** until **AUX** is shown as the selected audio output.
- E. Wait a moment while the Aux audio is enabled and then you should hear channel 1 playing through the radio/headunit.

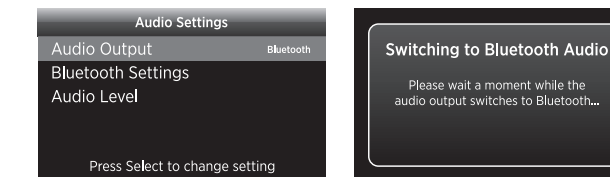
**TIP:** Refer to your vehicle owner's manual to find the location of the auxiliary input jack, or consult the vehicle dealer.



**Bluetooth: Best:** Connect the audio using Bluetooth if your vehicle's radio/headunit supports Bluetooth.

Note that Roady BT is only compatible with radios and headunits which support the Bluetooth audio streaming protocol. If the vehicle radio/headunit only supports the Bluetooth phone protocol, Bluetooth cannot be used for the Roady BT audio connection.

- A. Temporarily turn off Bluetooth capability in any devices that you may have with you during the installation, such as a cellphone, to avoid other devices connecting to the vehicle's radio/headunit instead of Roady BT.
- B. Place the vehicle's radio/headunit in Bluetooth pairing mode. Refer to the vehicle owner's manual for instructions on how to do this.
- C. Press the **Menu button** on Roady BT and then, press **▼** to highlight **Audio Settings** and press the **Select button**.
- D. **Audio Output** will be highlighted. Press the **Select button** until **Bluetooth** is shown as the selected audio output, and then wait a moment while Bluetooth is enabled.
- E. Press **▼** to highlight **Bluetooth Settings** and press the **Select button**.



Scan for latest offers & to activate  
or visit [siriusxm.com/activatenow](http://siriusxm.com/activatenow)



## QUICK START GUIDE

SATELLITE RADIO DESIGNED FOR IN-VEHICLE USE

### ROADY BT



Self installation instructions and tips are provided for your convenience. It is your responsibility to determine if you have the knowledge, skills and physical ability required to properly perform an installation. SiriusXM shall have no liability for damage or injury resulting from the installation or use of any SiriusXM or third party products. It is your responsibility to ensure that all products are installed in adherence with local laws and regulations and in such a manner as to allow a vehicle to be operated safely and without distraction. SiriusXM product warranties do not cover the installation, removal or reinstallation of any product.

Sirius XM Radio Inc.  
1221 Avenue of the Americas, 36th Floor  
New York, NY 10020

[siriusxm.com](http://siriusxm.com)

1.866.635.2349

© 2022 Sirius XM Radio Inc.

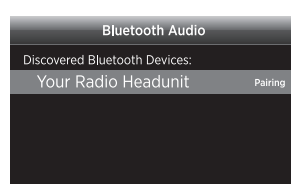
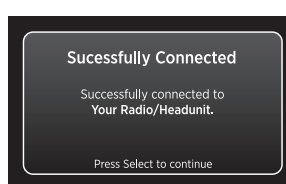
SXVRBTQSG 220120a

6

## Connect the Audio (continued)

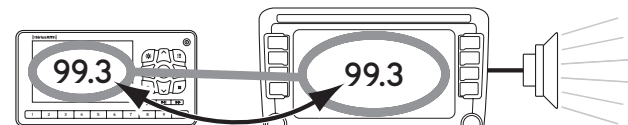
- Add New Bluetooth Device** will be highlighted. Press the **Select button**.
- The **Pair Bluetooth Device** message is displayed. Verify that the vehicle's radio/headunit is on, is discoverable and in pairing mode and press the **Select button** to continue.
- Wait as Rody BT searches for discoverable Bluetooth devices. When the vehicle's radio/headunit is shown in the list, press **▼** to highlight the name and press the **Select button**. (If you don't know the Bluetooth name of the radio/headunit, refer to the vehicle owner's manual for the name.)
- Rody BT will begin pairing and when connected will display a **Successfully Connected** message. Wait a moment until you hear channel 1 playing through the radio/headunit.
- Press the **Select button**. Press and hold the **Menu button** to exit to the Now Playing screen.

If Rody BT was unsuccessful in pairing and connecting, a different Bluetooth pairing and connecting method may be necessary for this vehicle's radio/headunit. Please refer to the Rody BT **User Guide** for additional pairing and connecting methods ([siriusxm.com/guides](http://siriusxm.com/guides)), and also the Rody BT **FAQs** for the very latest Bluetooth tips and information.



**FM: Good:** Connect the audio using the **FM** feature of Rody BT to play the audio through your vehicle's FM radio.

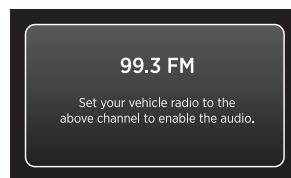
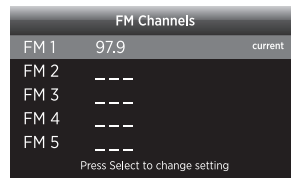
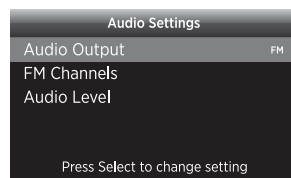
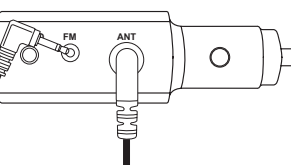
- Purchase an FM Direct Adapter (FMDA25) and follow the instructions included with the FM Direct Adapter and install the FMDA25.
- Connect the FM cable from the FMDA25 to the **FM** connector on the Intelligent Power Adapter.
- Press the **Menu button** on Rody BT and then, press **▼** to highlight **Audio Settings** and press the **Select button**.
- Audio Output** will be highlighted. Press the **Select button** until **FM** is shown as the selected audio output and wait a moment while the FM audio is enabled.
- Set Rody BT to transmit on the same FM channel that you have selected on your vehicle's FM radio:
  - Press the **Menu button** on Rody BT and then press **▼** to scroll to and highlight **Audio Settings** and press the **Select button**.
  - Press **▼** to scroll to and highlight **FM Channels** and press the **Select button**.
  - Press **▼** to scroll to and highlight **FM2**. Press the **Select button**.
  - Press **◀** and **▶** to tune in steps of .2, or press **▼** and **▲** to tune in steps of 1 to select the available FM channel you have chosen. Press the **Select button** to select the FM channel.
  - The selected FM channel will be confirmed on the display screen. Press and hold the **Menu button** to return to the Now Playing screen.



MATCH FM CHANNELS

- You should hear channel 1 playing through the vehicle's FM radio. If you are not satisfied with the audio quality, try a different FM channel.

**TIP!** You may find an FM channel with static or silence on the vehicle's FM radio that does not work with Rody BT. It is possible that some type of inaudible interference is present that prevents reception of the SiriusXM broadcast. The options are to use another FM channel or a different audio connection method.



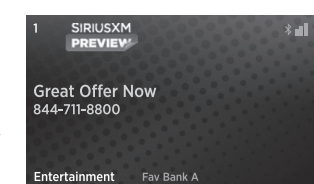
7

## Subscribe

You can follow either the general activation and subscription process or use the on-board activation guide to activate your Rody BT and subscribe to the SiriusXM service.

### General Activation and Subscription Process:

- Make sure Rody BT is turned on, receiving the XM signal, and tuned to XM Preview channel 1 so that you can hear SiriusXM audio.
  - Make a note of your SiriusXM Radio ID. You can find it by selecting **Radio ID** in menu items, by tuning to channel 0, on a label on the bottom of the gift box, and on the label on the Intelligent Power Adapter.
- NOTE!** The SiriusXM Radio ID does not use the letters I, O, S, or F.
- To subscribe:
    - Online: Go to [www.siriusxm.com/activatenow](http://www.siriusxm.com/activatenow) to access or set up an online account, subscribe to the service, and activate your Radio.
    - OR
    - By phone: Call **1-866-587-4225**.



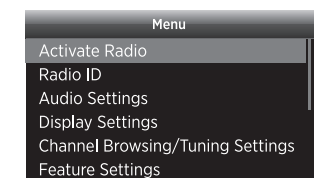
\*The phone number shown above may differ from the one shown on Rody BT. All numbers are valid.

Activation usually takes 10 to 15 minutes after you have completed the subscription process, but may take up to an hour. We recommend that your Radio remain on until subscribed. Once subscribed, the Radio will receive and you can tune to the channels in your subscription plan. Press **▲** or **▼** to tune to other channels, and **◀** or **▶** to browse the different categories of channels. Learn what all the Rody BT buttons do in the panel below.

### Activation Guide:

For your convenience, Rody BT has an on-board activation guide. You can activate your radio and subscribe to the XM service by using this guide, where you will be guided step-by-step through the subscription process. To access and use the guide, simply follow these steps:

- Turn Rody BT on and press the **Menu button**.
- Activate Radio** will be highlighted. Press the **Select button**.
- Follow the directions on each successive screen until you complete the subscription process.



!

## Rody BT Button Functions

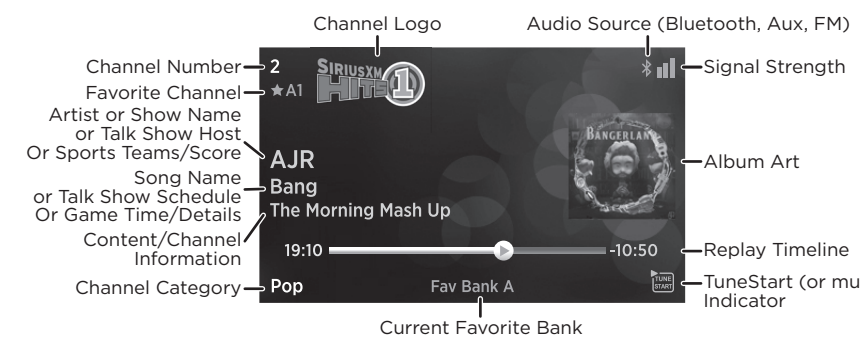
- Day/Night Brightness Button**  
Press to toggle between day and night brightness setting; **press and hold** to enter display settings in the Menu.
- Up and Down Buttons**  
Press to navigate up/down through channels, menus, and lists; **press and hold** to scroll continuously.
- Power Button**  
Press to turn Rody BT on and off.
- Menu Button**  
Press to access advanced features and configuration options; when in configuration options, **press and hold** to return to the Now Playing screen.
- Select Button**  
Press to confirm selection of highlighted item in a menu or list; **press and hold** to set a Song, Artist, or Game Alert at the Now Playing screen.
- Left and Right Buttons**  
Press to search for channels by category.
- Bank/Direct Tune Button**  
Press to toggle between favorite banks A & B; **press and hold** to enter Direct Tune and enter a channel number to tune.
- Play/Pause, Rewind, Fast-Forward Buttons**  
**Play/Pause:** Press to pause or resume playing the channel; **press and hold** to jump to live.  
**Rewind:** Press to skip back to the beginning of the song/segment; **press and hold** to continuously skip back.  
**Fast-Forward:** Press to skip forward when listening behind live broadcast; **press and hold** to continuously skip forward when listening behind live broadcast.
- Number Buttons**  
Press to tune to a stored favorite channel; **press and hold** to store a favorite channel. Also used to enter channel numbers when the **Direct button** is pressed.
- Jump Button**  
Press to go back to the previous channel to which you were listening.

!

## Rody BT Now Playing Screen

When listening to a channel, information about the channel and what is currently playing is displayed on the Now Playing screen.

The Rody BT User Guide is available at:  
[www.siriusxm.com/guides](http://www.siriusxm.com/guides).



!

## Specifications

<b>System</b>	Power Requirements: 9-16 V DC, 500 mA (max) Operating Temperature: -4°F to +140°F (-20°C to +60°C) Audio Output: 1.0 V <sub>rms</sub> (max)	Antenna Connector: SMB male FM Connector: 3/32 in (2.5 mm) female
<b>Rody BT Display</b>	Dimensions: 5.0 in (W) x 2.7 in (H) x 0.64 in (D) 128 mm (W) x 68 mm (H) x 16.35 mm (D) Weight: 4.1 oz (117 g)	<b>Vehicle Antenna</b> Type: SiriusXM Magnetic Mount Connector: SMB female, right angle Cable Length: Approximately 23 ft (7.0 m)
<b>Intelligent Power Adapter</b>	Dimensions: 3.7 in (W) x 2.1 in (H) x 1.2 in (D) 1.9 oz (57 g) Weight: 9-16 V DC / 5 V DC, 1.0 A Audio Connector: 1/8 in (3.5 mm) female	<b>Aux Audio Cable</b> Connectors: 1/8 in (3.5 mm) stereo male to 1/8 in (3.5 mm) stereo male Cable Length: Approximately 4 ft (1.2 m)
		<b>Display Cable</b> Connectors: USB Micro-B male to male Cable Length: Approximately 6 ft (1.8 m)

!

## Important Legal Information

**Copyrights and Trademarks**  
© 2022 SiriusXM Radio Inc. SiriusXM, Pandora and all related logos are trademarks of Sirius XM Radio Inc. and its respective subsidiaries. Other marks, channel names and logos are the property of their respective owners. All rights reserved. The Bluetooth® word mark and logos are registered trademarks owned by Bluetooth SIG, Inc. and any use of such marks by SiriusXM is under license.

**Important Legal Notice About Your Subscription**  
Hardware and subscription sold separately. Activation fee, other fees, and taxes required. All fees, content and features are subject to change. Our satellite service is available only to those at least 18 and older. **Installation instructions are provided. You must determine if you have the knowledge, skills and ability required to properly perform installation. Professional installation recommended. You must ensure that all products are installed in adherence with local laws and regulations and in such a manner as to allow a vehicle to be operated safely and without distraction.** SiriusXM product warranties do not cover the installation, removal or reinstallation of any product.

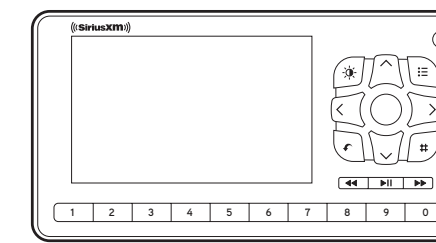
**FCC Statement**  
The user is cautioned that changes or modifications not expressly approved by Sirius XM Radio Inc. can void the user's authority to operate this device. This device complies with Part 15 of the FCC Rules. Operation is subject to the following two conditions:  
1. This device may not cause harmful interference.  
2. This device must accept any interference received, including interference that may cause undesired operation.  
This equipment has been tested and found to comply with the limits for a Class B digital device, pursuant to Part 15 of the FCC Rules. These limits are designed to provide reasonable protection against harmful interference to radio communications. However, there is no guarantee that interference will not occur in a particular installation. If this equipment does cause harmful interference to radio or television reception, which can be determined by turning the equipment off and on, the user is encouraged to try to correct the interference by one or more of the following measures:  
• Reorient or relocate the receiving antenna of the affected receiver.  
• Increase the separation between the SiriusXM equipment and the affected receiver.  
• Connect the SiriusXM equipment into an outlet on a circuit different from that to which the affected receiver is connected.  
• Consult the dealer or an experienced radio/TV technician for help.  
Part 15 Device Warning: Modifications by anyone other than the party responsible for compliance with the FCC rules may void the authority granted under FCC regulations to operate this device.

**FCC RF Exposure Statement**  
This Intelligent Power Adapter complies with FCC RF exposure limits set forth for an uncontrolled environment. This Intelligent Power Adapter should be installed and operated with a minimum distance of 20 cm (8 in) from your body.  
**WARNING!** The FCC and FAA have not certified this Satellite Radio Receiver use in any aircraft (neither portable nor permanent installation). Therefore, Sirius XM Radio Inc. cannot support this type of application or installation.

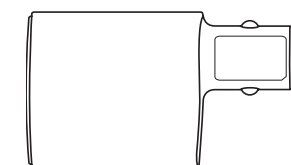
?

## What's in the Box?

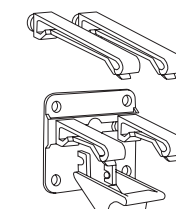
**CAUTION:** Do not attempt to install, activate, or adjust any of the setting options described in this Quick Start Guide unless your vehicle is parked in a safe location.



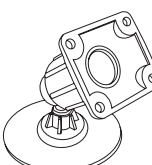
Rody BT Display



Intelligent Power Adapter



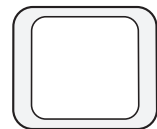
Vent Mount and Extended Vent Clamps



Dash Mount



Magnetic Adapter



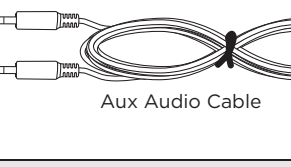
Extra Adhesive



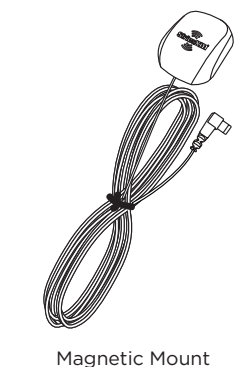
Display Cable



Antenna & Dash Mount Alcohol Preparation Pads



Aux Audio Cable



Magnetic Mount Antenna